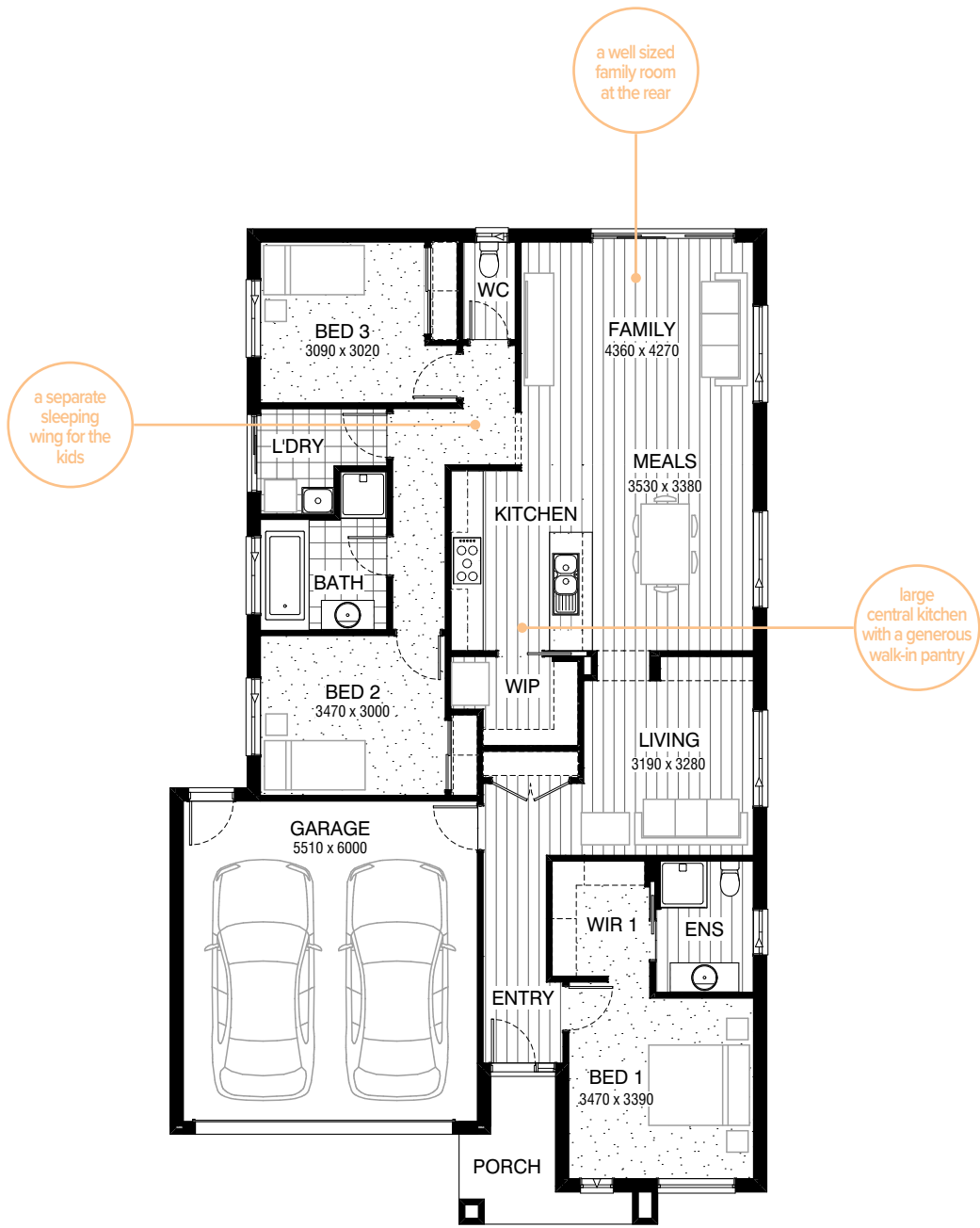


KELLY SWIFT 182

Fits min lot width **12.5m**
Fits min lot depth **25.0m**

Total squares **19.6sq**

 **3**  **2**  **2**



The Kelly Swift 182 has been designed with all potential homebuyers in mind. From first homebuyers seeking a stylish, functional and affordable floorplan, right through to fully grown families looking for space to spread out and entertain. It's the perfect fit for any lifestyle.

| | |
|----------------------------|---------------|
| Facades available: | |
| Arkley, Drysdale, Haring | |
| Overall home width | 11.15m |
| Overall home length | 18.59m |

| | | |
|--------------|---------------------------|---------------|
| Residence | 140.0m ² | 15.1sq |
| Garage | 36.4m ² | 3.9sq |
| Porch | 5.5m ² | 0.6sq |
| Total | 181.9m² | 19.6sq |

Listed details based on Drysdale facade floorplan (illustrated)